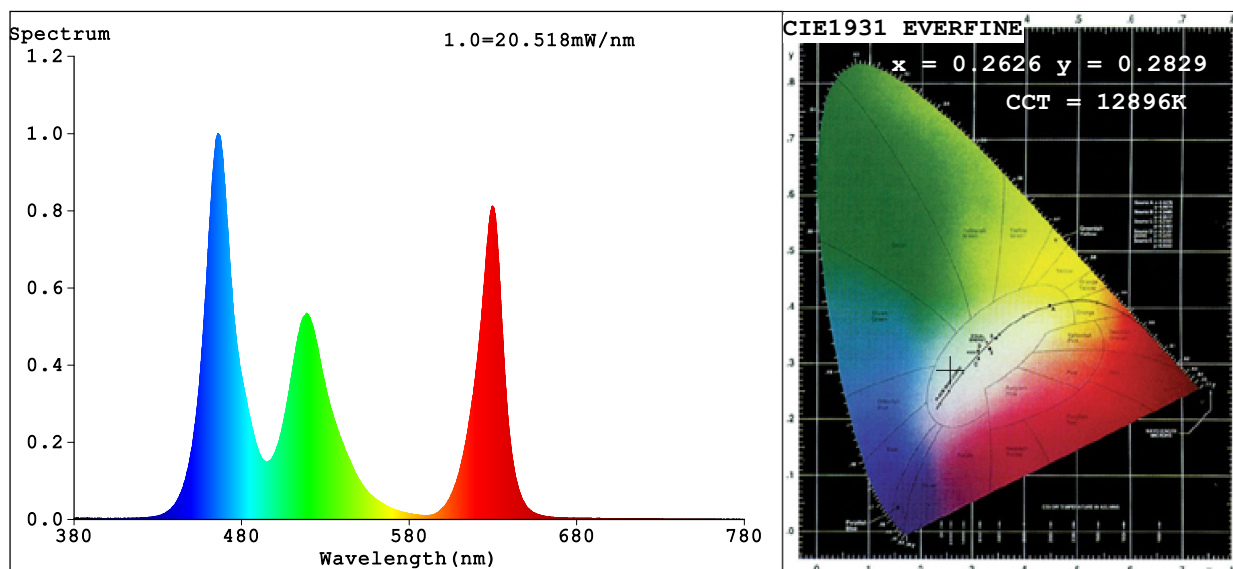


## Spectrum Test Report



### Color Parameters:

Chromaticity Coordinate:  $x=0.2626$   $y=0.2829$   $u'=0.1789$   $v'=0.4338$   
CCT=12896K (Duv=0.0088) Dominant WL:Ld =481.9nm Purity=28.3%  
Ratio:R=23.5% G=64.7% B=11.8%; Peak WL:Lp=465.9nm FWHM=18.7nm  
Render Index:Ra=42.7 CRI=38.7 TM30:Rf=40 Rg=111  
R1 =24 R2 =55 R3 =72 R4 =44 R5 =46 R6 =49 R7 =51  
R8 =0 R9 =0 R10=0 R11=36 R12=57 R13=28 R14=80 R15=6

### Photo Parameters:

Flux = 281.3 lm Eff. : 23.20 lm/W Fe = 1.187 W

### Electrical parameters:

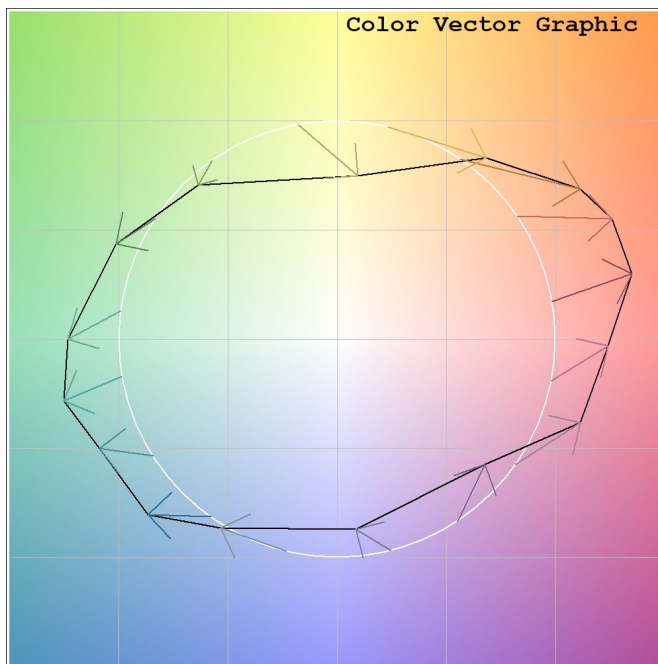
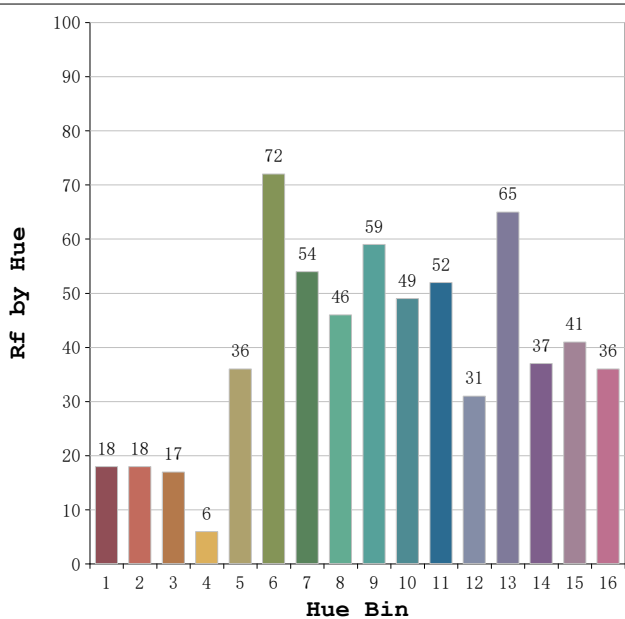
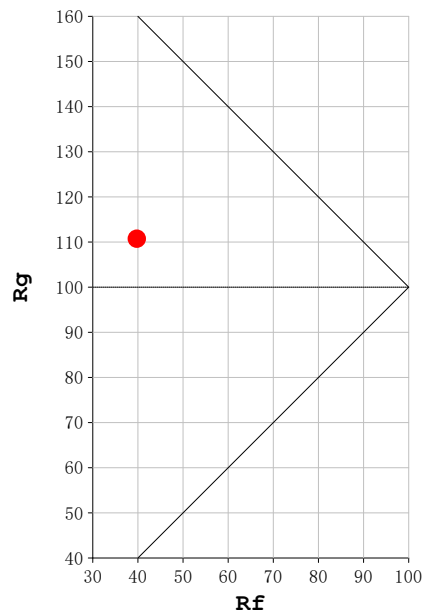
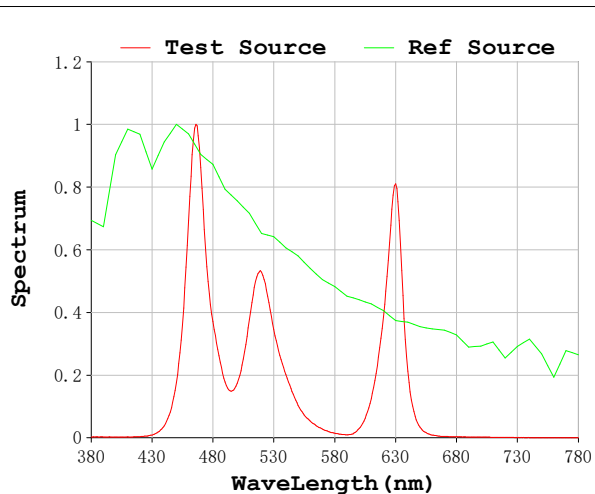
V = 23.998 V I = 0.5052 A P = 12.12 W PF = 1.000

Status: Integral T = 1608 ms Ip = 50908 (78%)

Model:Ecoled Neon Kenya RGB  
Tester:Sergio Carneros  
Temperature:25Deg  
Manufacturer:Luz Negra

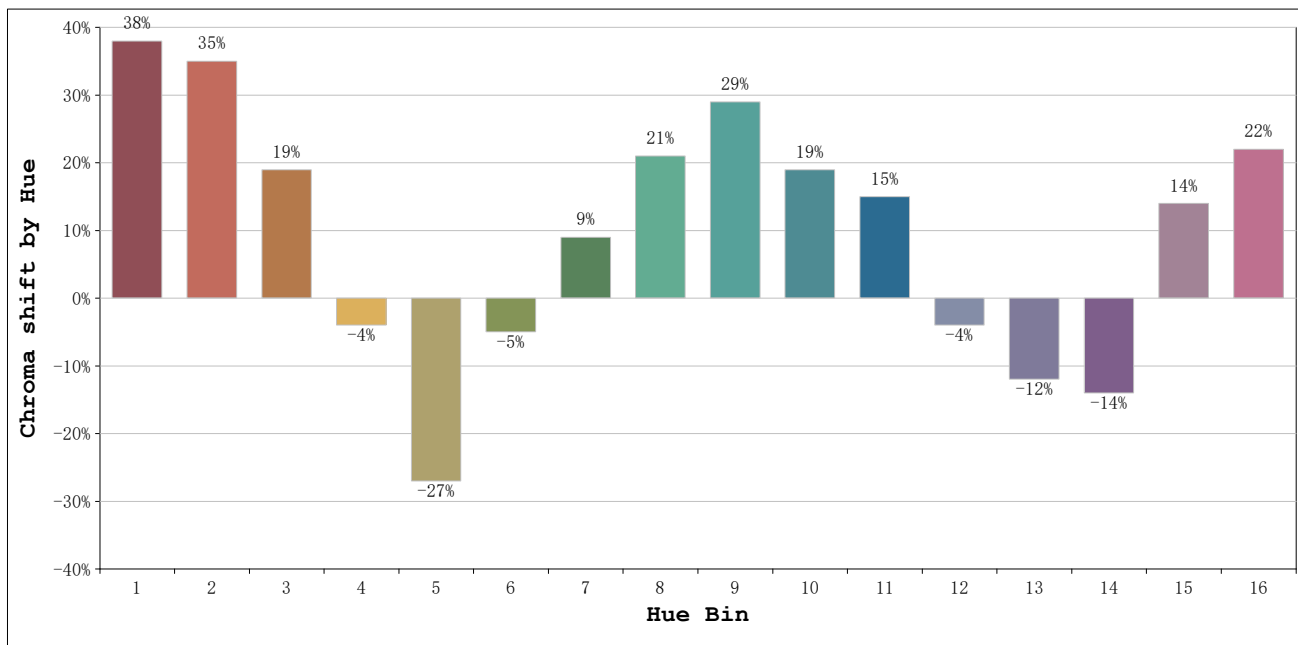
Number: 10.277  
Date:2024-07-04 08:28:28  
Humidity:57%  
Remarks:100cm de Neon R+G+B

**Rf: 40**      **CCT: 12896 K**      **u': 0.1789**  
**Rg: 111**      **Duv: 0.0088**      **v': 0.4338**



Model:Ecoled Neon Kenya RGB  
 Tester:Sergio Carneros  
 Temperature:25Deg  
 Manufacturer:Luz Negra

Number: 10.277  
 Date:2024-07-04 08:28:28  
 Humidity:57%  
 Remarks:100cm de Neon R+G+B



			Graphic shift(%)	
Hue Bin	Hue Angle	Rf	Chroma	Hue
1	0.0° - 22.5°	18	38	5
2	22.5° - 45.0°	18	35	-24
3	45.0° - 67.5°	17	19	-52
4	67.5° - 90.0°	6	-4	-46
5	90.0° - 112.5°	36	-27	-22
6	112.5° - 135.0°	72	-5	12
7	135.0° - 157.5°	54	9	20
8	157.5° - 180.0°	46	21	18
9	180.0° - 202.5°	59	29	6
10	202.5° - 225.0°	49	19	-15
11	225.0° - 247.5°	52	15	-24
12	247.5° - 270.0°	31	-4	-30
13	270.0° - 292.5°	65	-12	-13
14	292.5° - 315.0°	37	-14	25
15	315.0° - 337.5°	41	14	32
16	337.5° - 360.0°	36	22	21

Model:Ecoled Neon Kenya RGB  
 Tester:Sergio Carneros  
 Temperature:25Deg  
 Manufacturer:Luz Negra

Number: 10.277  
 Date:2024-07-04 08:28:28  
 Humidity:57%  
 Remarks:100cm de Neon R+G+B